

ZOOMAX® Butterfly

Handheld Video Magnifier

User's Guide

ZOOMAX

Version 3.2

ZOOMAX Technology Co., Limited

9F, Building D, Paradise Software Park,

No.3 Xidoumen Road, Xihu District, Hangzhou, China

310012

Copyright© 2015 ZOOMAX Technology Co., Limited. All Rights Reserved. ZOOMAX® is a trademark of ZOOMAX Technology Co., Limited in the United States and other countries. Information in this document is subject to change without notice. No part of this publication may be reproduced or transmitted in any form or by any means electronic or mechanical, for any purpose, without the express written permission of ZOOMAX.

If you have any questions or suggestions concerning the use of this product, please contact your distributor or ZOOMAX by e-mail: sales@zoomax.co.

To search the knowledge base, please visit www.zoomax.co or choose the relative links.

Contents

1. Introduction.....	1
About this user's guide.....	1
What's in the box?.....	1
2. Getting to know your Butterfly.....	2
Top side.....	2
Front side.....	3
Back side.....	5
Right side.....	6
Underside.....	7
3. Getting started.....	7
Turning the power on / off.....	7
Using the magnification wheel.....	8
Selecting a viewing mode.....	9
Using the snapshot button.....	9
Writing with the Butterfly.....	10
Using the Butterfly reading stand.....	11
Brightness adjustment.....	12
4. Power and battery use.....	12
Charging Butterfly.....	12
System Auto Off.....	13
Troubleshooting.....	13

ZOOMAX[®] Butterfly

Appendix A: Safety.....	14
Appendix B: Technical information.....	15
Other Product from ZOOMAX:.....	17

1. Introduction

Congratulations on choosing the **Butterfly**, a pocket size electronic video magnifier from ZOOMAX. **Butterfly**, it enables you to view printed text and images in continuous magnifications up to 15 times on a 3.5” display. With its simplicity, **Butterfly** offers an enhanced design that extends in operating comfort. It is designed for instant use at any location. If you have any questions or suggestions concerning the use of this product, please contact your distributor or contact ZOOMAX company Your feedback is greatly appreciated. We hope you enjoy the use of your **Butterfly**.

About this user’s guide

This user’s guide familiarizes you with the features and basic operation of **Butterfly**. Please read this user’s guide carefully before using your **Butterfly**.

What’s in the box?

The **Butterfly** packing contains the following:

- _ The **Butterfly video magnifier** with integrated rechargeable battery
- _ A detachable wrist cord
- _ A protection pouch
- _ A power cable with power adapter
- _ The user's guide

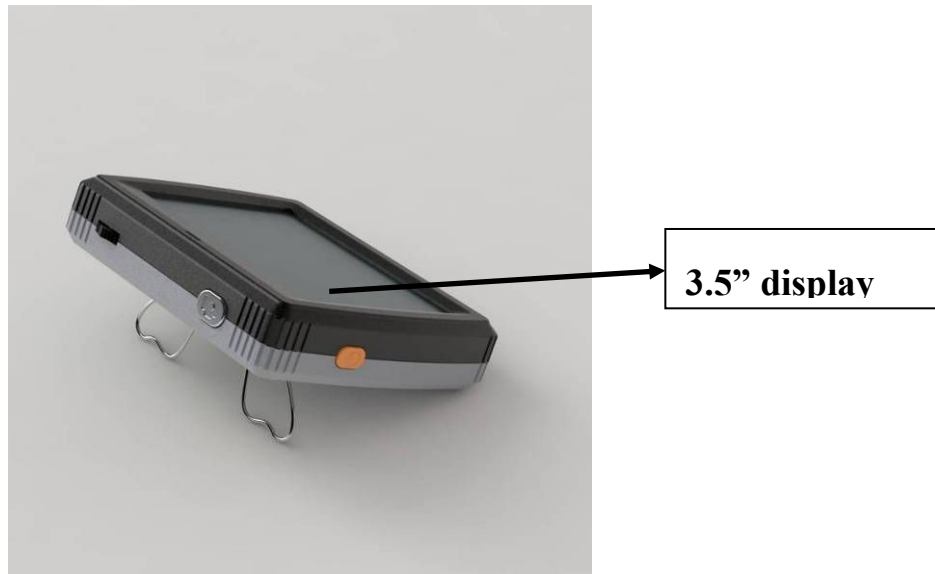
If any item missed, please contact your distributor.

2. Getting to know your Butterfly

The unit is placed correctly in front of you when the display is facing up and the ZOOMAX logo is on the top of the display.

Top side

The following figure shows the top side of **Butterfly**



Front side

The following figure shows the front side of **Butterfly**

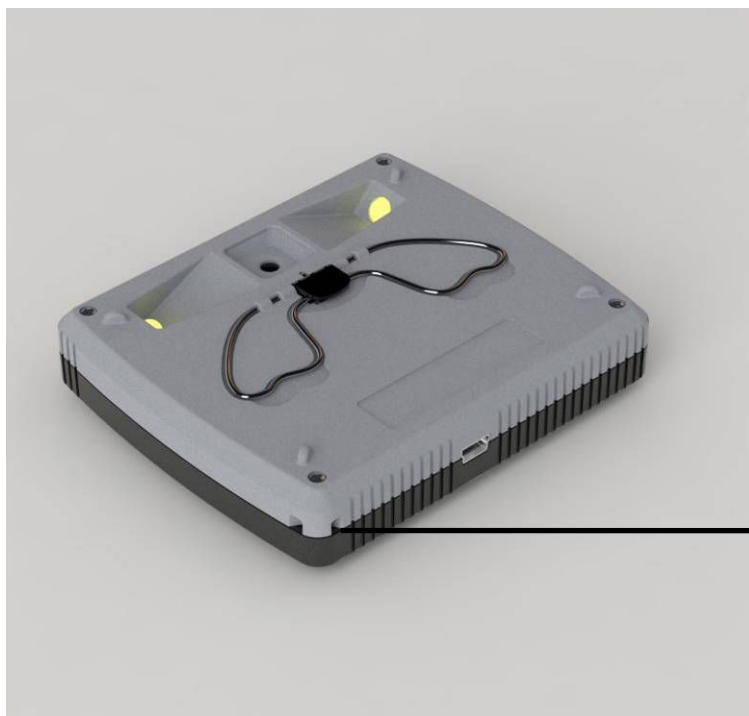


**Color Mode &
magnification
wheel**



Mode: Press the wheel. It allows you to select your favorite color mode among 5 contract color

Magnification: Turn the wheel clockwise or counterclockwise. It allows you to change the magnification (zoom in/out)



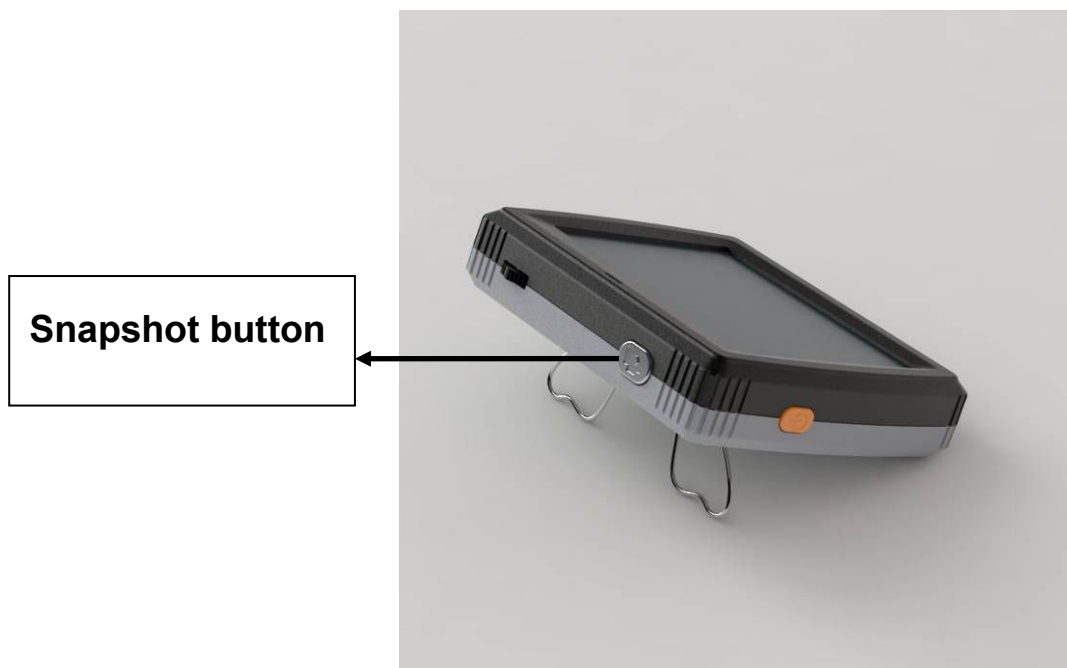
Cord fixture

Back side

The following figure shows the back side of **Butterfly**.



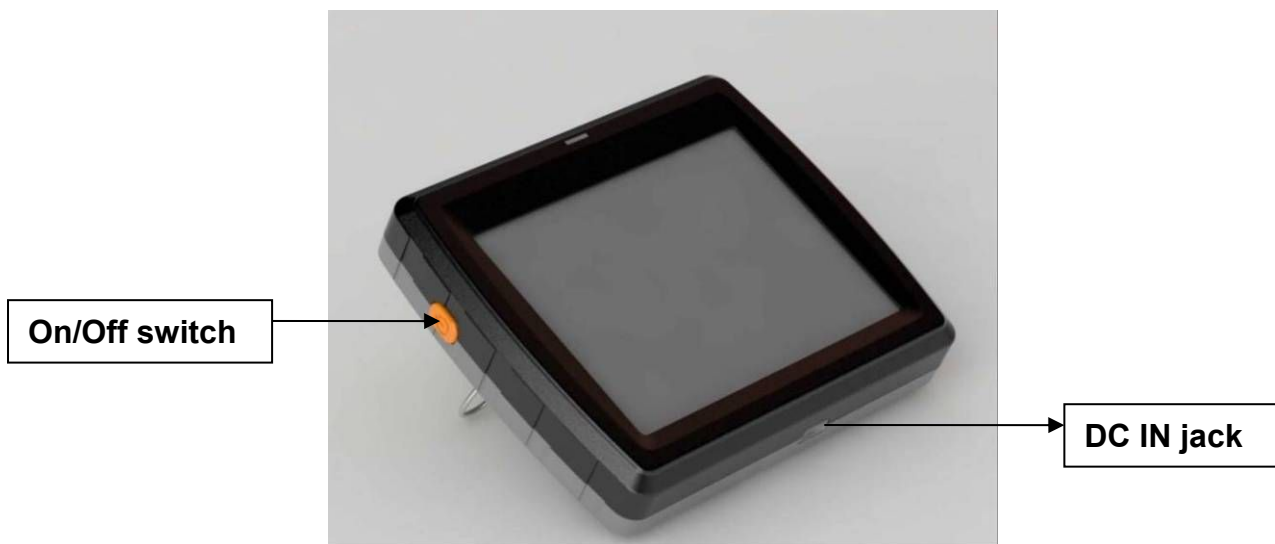
Snapshot button



Snapshot button: The snapshot button allows you to take a temporary picture of a distant text or image, enabling you to bring the image closer to your eyes for easier reading.

Right side

The following figure shows the right side of **Butterfly**.

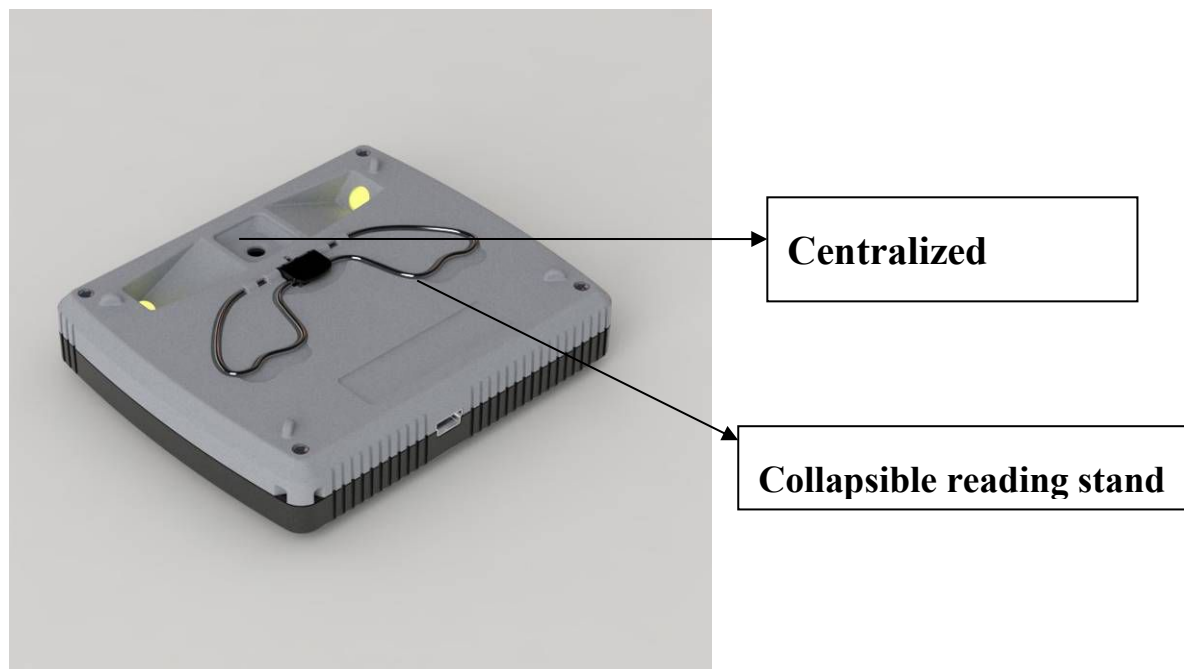


On / Off switch: Press the small round orange button for two seconds to switch the unit on / off

DC IN 5V jack: The AC adapter cable connects to this jack. Use only the model of AC adapter that comes with original packing of **Butterfly**

Underside

The following figure shows the underside of **Butterfly**.



Camera: Butterfly features an auto-focus camera that centralizes on the screen for an optimal ease of use while reading or writing

Reading stand: In order to get an optimal image quality, please extend the reading stand before placing the unit on a flat surface

3. Getting started

Turning the power on / off

Switch the unit on or off by pressing the orange button, located

at the right side of the unit, for about two seconds.

For the first time use, **Butterfly** starts up in Photo mode.

Afterwards, the unit starts up in the mode.

Using the magnification wheel

To set the magnification (zoom in / out), simply operate the magnification wheel located on the front side under the display.

Turn the wheel clockwise to decrease or counter clockwise to increase the magnification. It allows you to select the favorite magnification levels .Once the wheel is released, it springs back to the middle position. Lifting the unit, allows you to lower the magnification down to 1.5X.

Selecting a viewing mode

Press the mode wheel on the front side of the unit.It allows you to select one of the five viewing modes:

- **Negative mode**: reading in high contrast white on black
- **Positive mode**: reading in high contrast black on white
- **Photo mode**: view full color text and photos
- **High contrast yellow text on a blue background**: reading in

high contrast yellow on blue

- High contrast **yellow text on a black background**: reading in

high contrast yellow on black

Using the snapshot button

The snapshot button allows you to temporary freeze the a text or an image

- Hold or place **Butterfly** over the text or image
- Press the oval shaped snapshot button located at the back side above the display
- Bring the image closer to your eyes to view the object or text
- Operate the magnification wheel located on the front side of the unit to change the magnification
- Press the wheel on the front of the unit to change the viewing mode
- Press the snapshot button again to unfreeze the image
- Long-press this button for 3 seconds to turn on / off LED lights.

Long pressing the Snapshot button allows you to switch object lighting off. Object lighting can be turned on and off in each of the above mentioned viewing modes, facilitating reading of

glossy magazines, displays and screens. Long pressing the Snapshot button again helps to switch object lighting back on, whereas selecting the next viewing mode by a long press of the Snapshot button will turn the lighting on, too.

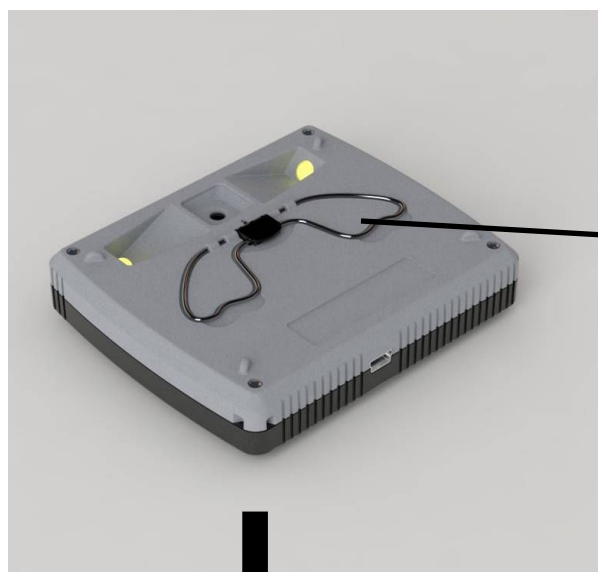
Writing with the Butterfly

Butterfly has a super-light design enabling you to hold the unit easily while writing. Take a pen in one hand while holding the unit in your other hand above the paper and start writing.

Follow your hand movement with **Butterfly** and magnify your handwriting instantly.

Using the Butterfly reading stand

Butterfly is designed to read documents comfortably on a flat surface with the use of the integrated reading stand. Pull the stand at the arrow sign to extend it. The collapsible reading stand gives you control for optimal reading comfort.



**Pull here to extend
the reading stand**



Brightness adjustment

Simultaneously press snapshot button and turn the mode wheel to right or left, you see Brightness adjustment bar appears on the screen. Then, adjust the brightness by turn the wheel clockwise or counterclockwise. Press mode wheel to

exit if you finish the adjustment. Or, you wait for 5 seconds for the unit to exit from this function automatically.

4. Power and battery use

Charging Butterfly

To charge **Butterfly**, connect the adapter supplied in the box to the DC IN 5V jack, located at the right side of the unit. Plug the other side of the adapter into a power outlet. The orange LED indicator next to the adapter socket glows continuously while the **Butterfly** is charging. If the unit is fully charged, the LED light switches off automatically. If the LED indicator starts to flash, it means there is a charge problem. Disconnect the adapter and try it again.

Charging the **Butterfly** takes approximately three hours. A fully charged **Butterfly** can operate for approximately 3.5 hours continuously. Please note that, for safety reasons, only the adapter that came with the original packing of **Butterfly** can be used to charge battery compartment of the unit.

System Auto Off

If you don't use **Butterfly** at a period of 2 minutes, the unit turns off automatically.

Troubleshooting

Problems	Solutions
Black screen	<ul style="list-style-type: none"> ● Ensure that the power is on. ● Charge the battery. ● Decrease the magnification level. ● Ensure the image is below the crosshair.
The unit will not turn on.	<ul style="list-style-type: none"> ● Charge the battery.
The image on the screen is dark or distorted.	<ul style="list-style-type: none"> ● Ensure the unit is flat on the viewed material.
Power adapter is connected but the battery is not charging.	<ul style="list-style-type: none"> ● Ensure the outlet has power and the plug is fully inserted in the power port.
Smudges or blemishes on the screen.	<ul style="list-style-type: none"> ● Clean camera and screen with soft cloth.
Text is too small to read.	<ul style="list-style-type: none"> ● Adjust the magnification up to suitable level. ● Connect to a TV with the supplied cable.

Text is too large to read.	<ul style="list-style-type: none">● Adjust the magnification down to suitable level.● Lift/move the unit a little away from the viewed material.
The screen is frozen or distorted or any other problem not mentioned in this manual.	<ul style="list-style-type: none">● Long press Mode and Power buttons together to switch off forcibly. Then, restart the unit.

If your problem is not listed above, please contact your local distributor.

Appendix A: Safety

- _ Do not expose **Butterfly** to excessive heat or direct sunlight to avoid the risk of fire.
- _ Do not remove any parts of **Butterfly**. Contact your distributor or a ZOOMAX authorized service organization in your area.
- _ To avoid risk of electrical damage, keep your **Butterfly** away from fluids and chemicals.
- _ Handle **Butterfly** with care. Rough handling will damage the internal components.

- _ Do not use **Butterfly** near inadequately shielded medical devices.
- _ Do not try to open the battery compartment or try to remove the battery.
- _ Contact your dealer to service this equipment if necessary.
Do not open your unit as it will void the warranty.
- _ Always unplug the system before cleaning. Use a soft damp cloth to clean the exterior.
- _ Do not use cleaning agents or abrasive materials as they will damage your unit.
- _ Use of **Butterfly** other than described in this user's guide will exclude it from warranty conditions.

Appendix B: Technical information

Magnification: 1.5X - 15X

Viewing modes: High contrast white on black

High contrast black on white

Full color photo mode

High contrast yellow on blue

High contrast yellow on black

Focus: Auto-focus

ZOOMAX[®] Butterfly

Screen: 3.5" TFT

Screen resolution: 320 x 240

Battery: 3.5 hours continuous use

3 hours charging time

Built-in Li-ion battery rechargeable, 1400mAh

Weight: 120 grams / 4.2 ounces (include battery)

Power supply type SMPS 100V-240V, 50 /60Hz 0.2A / 5V/1A

Operation conditions:

Relative humidity: <70 %, no condensation




Temperature: 0 – 40 ° C

Storage and transport conditions: Relative humidity: <95 %,no

condensation Temperature:

-10 ° C – 40 ° C

Other Product from ZOOMAX:

Item Name	Product Photo	Product Description
Snow 7”		<p>Snow 7 HD is a creative design that offers real-time crisp images on the ergonomically settled wide screen, and is still the easiest to use. With its small book size and only 16.93 ounce, Snow 7 HD can be taken and used to read closely and see at a distance anywhere, home, school, office, bus stop, shop, etc.</p>
Snow 4.3”		<p>Snow is given the most advanced image technology and best camera. It offers sharp image even at the lowest magnification and under the fast movement. No learning but easy to use skillfully at the very beginning with the large button. You can read and write even when you are travelling.</p>
Aurora HD 24”		<p>Aurora HD, new foldable desktop video magnifier, integrates the advanced camera technology with the different needs of users. Aurora HD cares your distinct operation needs at different operating levels. More comfortable image, less eye strain you get. You can also perform sorts of tasks easily with the flexible swivel monitor in diverse directions. For the tailored position of light and adjustable illumination, reading or writing becomes easier and carefree without shadow or glare bothering. 24”widescreen means more content for reading at one time. No trouble of installation but power on directly.</p>